

RERA No.
UPRERAPRJ913469/02/2025
website: www.up-rera.in



ELITE Square

Where Prestige Meets Perfection



A PROJECT BY:

ELITE
INFRAVISION
Creating Spaces, Enriching Lives

About Company

Elite Infravision specializes in developing residential and commercial spaces that combine modern design, quality craftsmanship, and functionality.

From luxurious homes to dynamic business hubs, every project is designed to inspire and endure. With a customer-first approach, the focus remains on superior construction, innovative planning, and timely execution, ensuring the highest standards in every aspect. A commitment to excellence drives the creation of spaces that enhance both lifestyles and business growth. Whether it's a dream home or a strategic commercial space, Elite Infravision is dedicated to turning visions into reality.



About the Project

Elite Square is designed to offer a modern, dynamic, and thriving business environment. With a perfect blend of functionality, aesthetics, and convenience, it provides an ideal space for shops, offices, and dining experiences. Thoughtfully planned with contemporary infrastructure and essential amenities, Elite Square ensures a seamless and secure business experience, making it a promising investment opportunity.

A Premier Destination for Work, Shop & Dine.

Located in a prime commercial hub, Elite Square offers excellent connectivity and modern infrastructure. Surrounded by corporate offices, banks, and premium amenities, it features spacious offices, high-speed elevators, ample parking, and 24/7 security. The perfect destination for businesses seeking prestige, convenience, and growth.



A good investment is foundation of better tomorrow.



Future that you can build today.

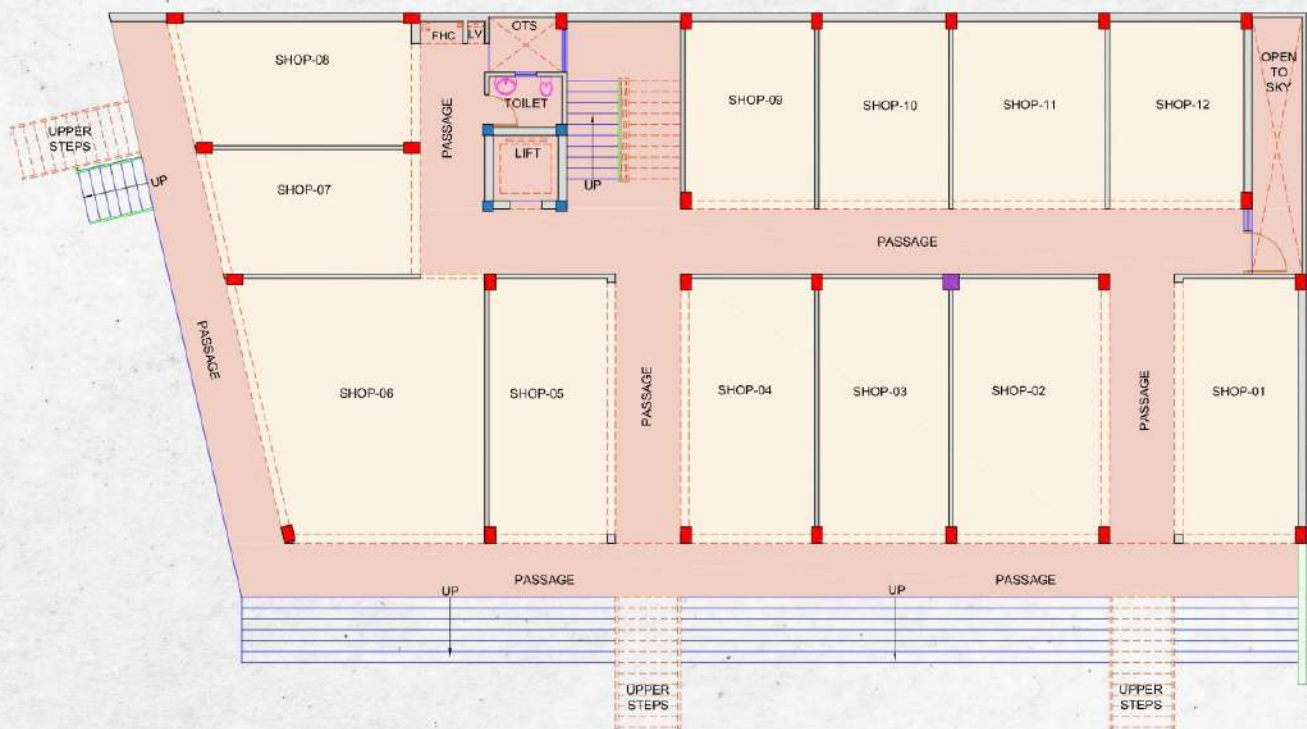


Today's dream that comes true tomorrow.

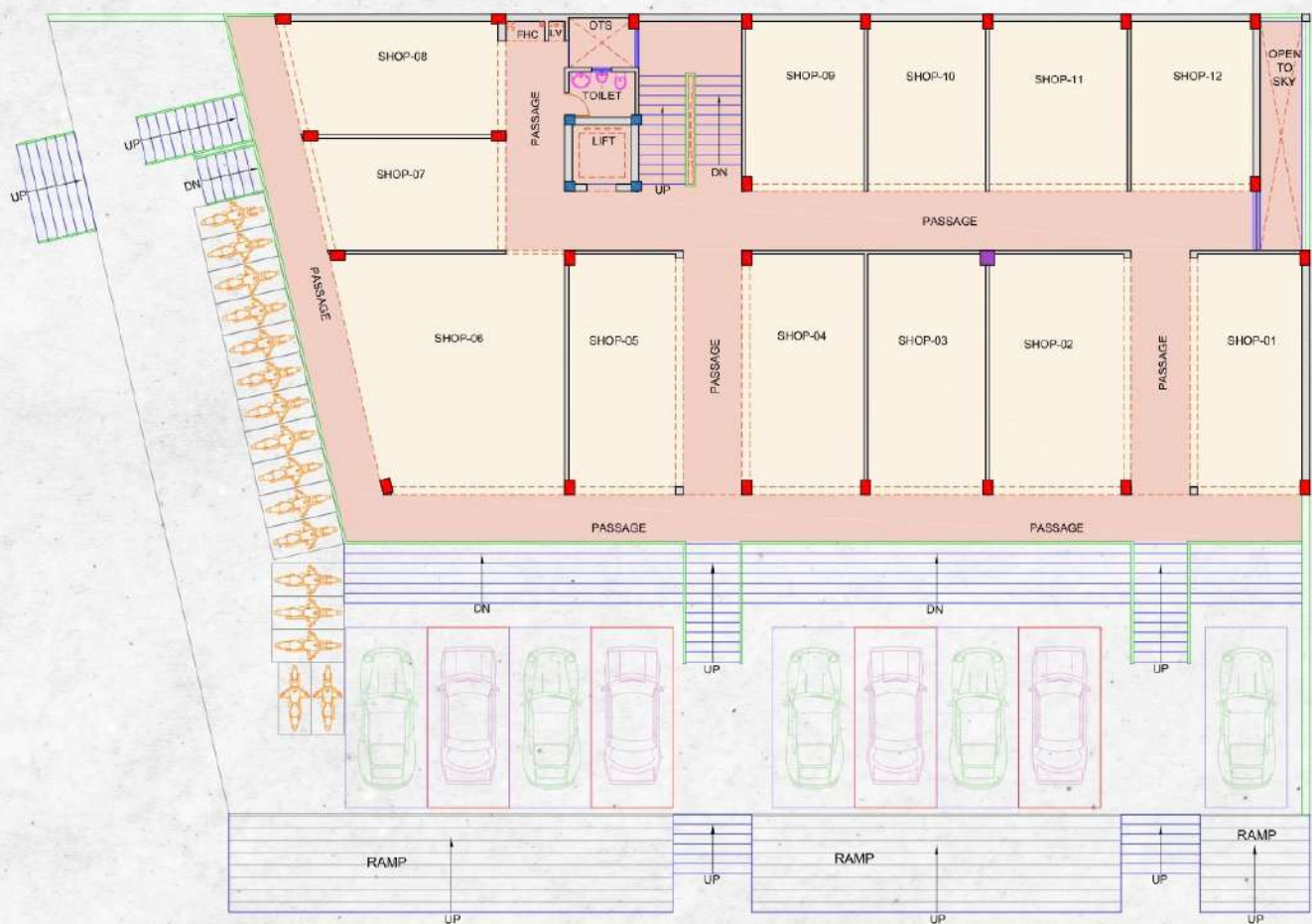


First step towards a journey of thousand miles.

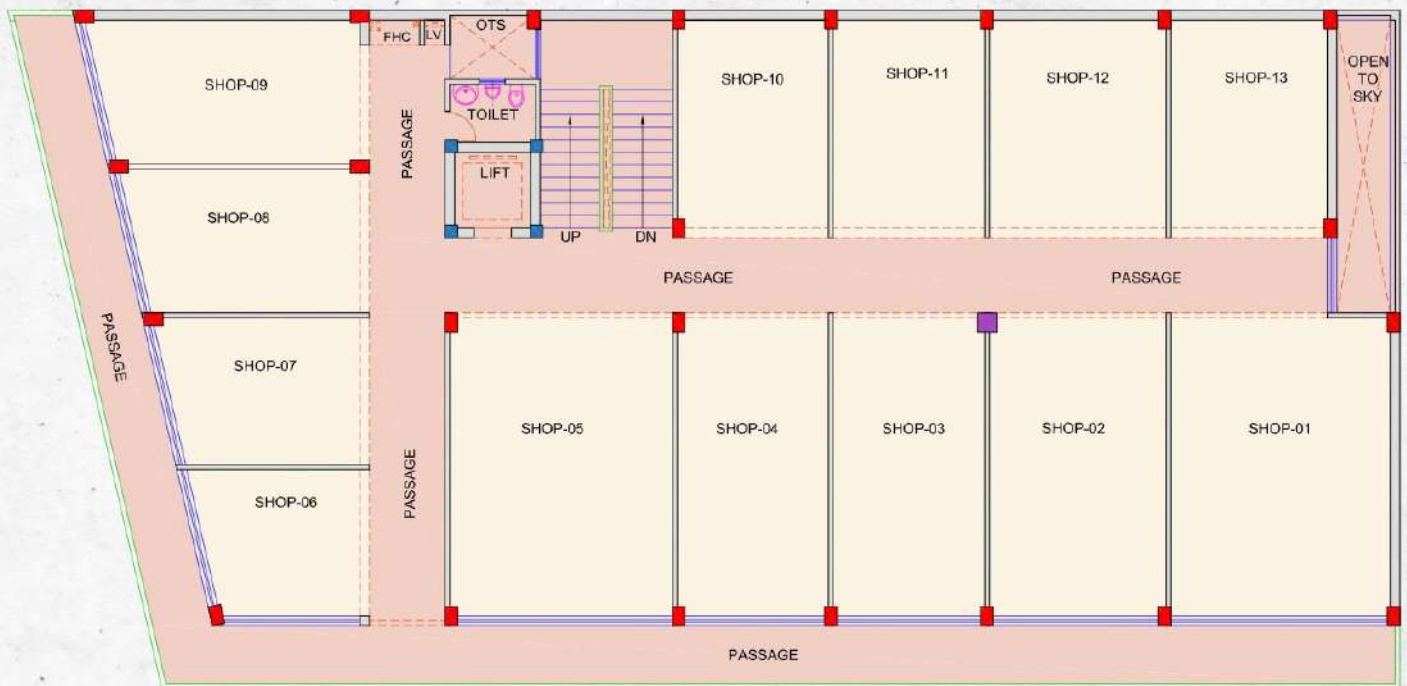
Experience the Difference
at Elite Square



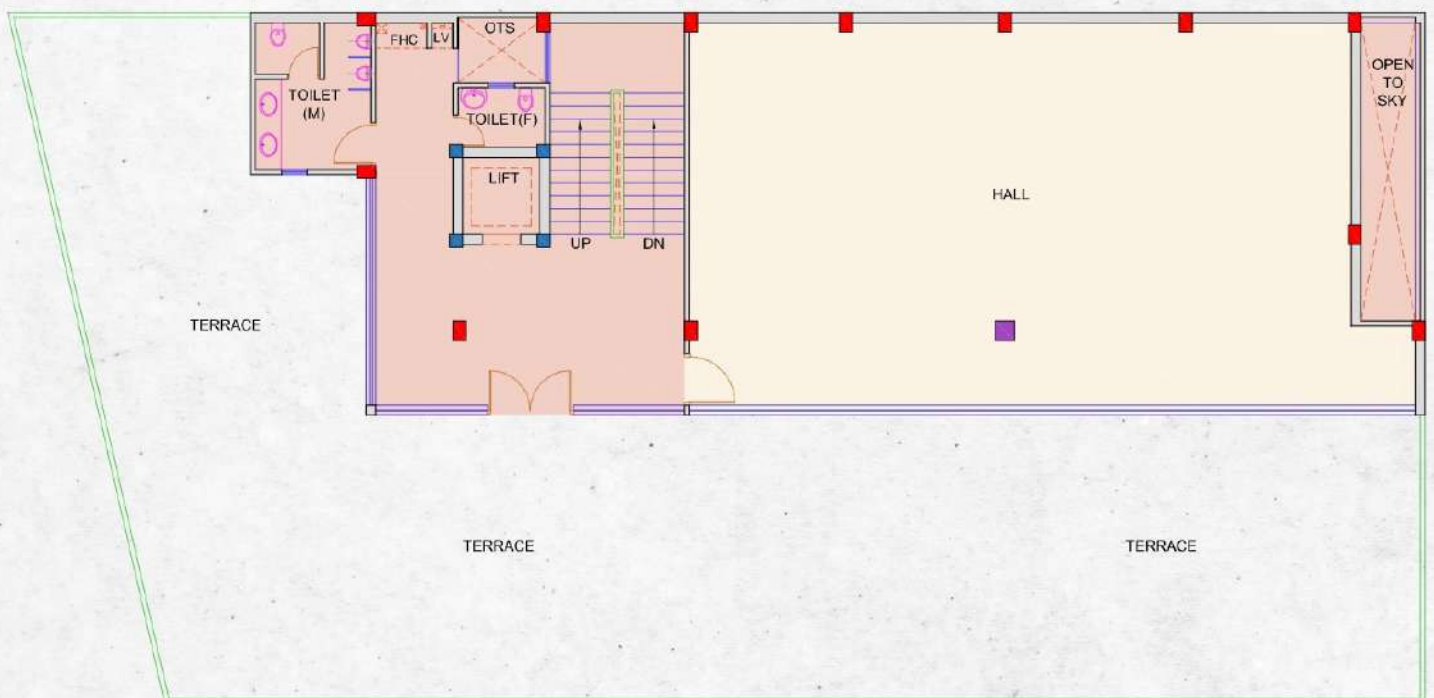
LOWER GROUND FLOOR PLAN



UPPER GROUND FLOOR PLAN



FIRST FLOOR PLAN



SECOND FLOOR PLAN

Features of Elite Square

- Shops & offices available in different sizes & budget
- Stylish Shutter for each shop
- Round the clock security
- 100% power backup in common areas
- Ultramodern elevation of glass facade
- Adequate parking for owners and visitors
- Wide corridors and passage
- A sound business opportunity with attractive investment potential
- Fire protection with advanced fire alarm system



Site Location



Location Highlights:

Amar Shaheed Path: 2 Min
Medanta Hospital: 1 Min
Lulu Mall: 2 min
Awadh Shilp Gram: 2 Min

Iskcon Temple: 3 min
SGPGI: 5 Min
Airport: 12 min

Scan for Location:



Site Office: 3CP/25, Sector-3, near Medanta Hospital, Awadh Vihar Yojna, Lucknow-226030, Uttar Pradesh.

Corporate Office: Basement, Tower-A, The Grace Apartments, Sector-B, Sushant Golf City, Lucknow-226030, Uttar Pradesh.

Regd. Office: 78 A, Ravindra Palli, Faizabad road, Lucknow-226016, Uttar Pradesh.

Mobile: +91-73888 88061, **Email:** info@eliteinfravision.com

Website: www.eliteinfravision.com

Project Launch Date: 17 Feb 2025

Bank Account Name: Elite Infravision-Collection Account- Elite Square
A/c No. 0294002900000136, Bank - Punjab National Bank, IFSC-PUNB0029400
Branch: Halwasia Building, Hazratganj, Lucknow.

Disclaimer: The visual representation shown in this brochure is purely conceptual and not a legal offering. All images, plans, specifications, site plan, layout plans etc are tentative and subject to variation and modification by the company or the competent authorities sanctioning plans.

Design & Print by:
Sparsh Brand Innovations (96218 09199)